

# Low-cost, high-speed, variable content printing

Transactional documents on open systems printers

**PLANETPRESS<sup>®</sup>**  
**VERSION 4**

Significant cost savings and improved document workflow can be realized if your transactional documents, such as invoices or statements, are still being printed on impact or proprietary laser printers. Move these documents to modern low cost laser printers and multi-functional devices with no change to the host system. In addition, you will be able to add targeted changing messages or information, based upon what you know about your customer.

PlanetPress 4 is a complete software solution that integrates with your existing hardware and software infrastructure, and scales with the size of your business operation.

## Benefits

- Eliminate expensive pre-printed forms
- Move to flexible open system laser printers
- Improve output quality and corporate image
- Print complex documents at high speed
- Easily manage distributed printing of transactional documents\*
- Control printer paper handling and finishing features

## Business Applications

**Statements and billing.** Enhance your corporate image with high quality documents. Automatically print Terms & Conditions, instructions or special offers, including varying messages or graphics based upon your customers purchases, time of year, or any other information contained within the data stream. No human intervention, no mistakes.

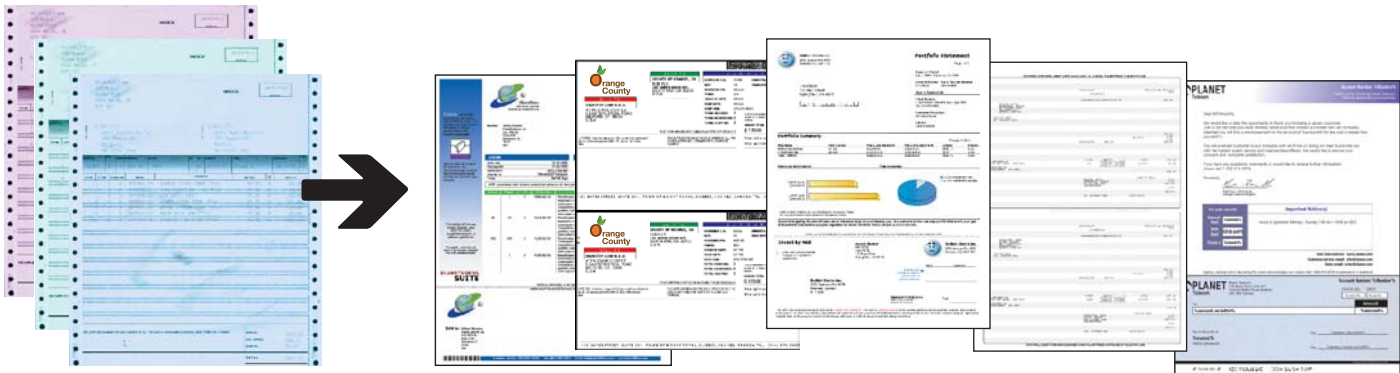
**Multi-part business form replacement.** Eliminate pre-printed multi-part business forms. Each copy is now as crisp and easy to read as the one before. Bursting or decollating, having to manage an inventory of pre-printed forms and wasting obsolete forms are no longer a concern.

**Financial and insurance documents.** Eliminate the pre-printing and manual assembly of policies. Automatically print the customer chosen policies and riders based upon the information contained within the data stream for a highly professional and personalized approach.

**Barcodes and labels.** Increase workflow efficiency. Print industry standard bar codes, even those used by major overnight shipping companies, from any host data. Simultaneously print pick tickets and labels such as shelf & item, pack & ship and UPC.

**Green bar report printing.** Print faster, reduce storage size, split and distribute reports by departments. Green bar reports are easily printed 2-up and duplex on regular cut sheet paper and offer logically forced front pages.

## BEFORE & AFTER



The old way.

The new way with PlanetPress.

# PLANETPRESS. VERSION 4 Features

**Easy document creation.** Create documents rapidly with easy, drag and drop tools and wizard driven design processes. Consult thorough context sensitive online help to learn more quickly, on the job.

**WYSIWYG formatting.** Format content using tools comparable to standard word processing applications.

**Drag and drop data import.** View the data stream, make a selection and then place it in the document. PlanetPress automatically senses and formats the incoming data.

**Conditional variable content.** Text and graphics can logically appear or disappear, according to the business need, based upon information contained within the data stream. Print the right elements, for the right customers, every time. Line conditions are also supported, changing for example the font or color of a line based upon information within that line.

**Graphics support.** Include graphics originating from standard formats including BMP, TIFF, JPG, EPS and PDF, with full color support. Preview large graphics and process them quickly with automatic optimization. Place, rotate and resize graphics directly in the document.

**Color support.** Manage color profiles based on printing criteria to ensure accurate on-screen rendering of documents through the creation process.

**Direct control over printer finishing features.** When designing variable content documents for a specific printer, incorporate commands to call finishing features such as stapling, collating and folding.

**Multilingual interfaces.** As you work with PlanetPress interface, choose from several language options. The double byte character support is also built right in.

**Data driven pie, line and bar charts.** Use wizard driven tools to include dynamic graphic data representation with labels.

**Data driven bar codes.** Use wizard driven tools to generate industry standard bar codes including: PDF-417, UPC/EAN, Code 39, Code 128 and PostNet.

**Custom scripting.** Use PlanetPress Talk to create variable content conditions without compromise, beyond the dialog and wizard driven toolset.

**Security.** Manage document access and privileges with passwords to protect content.



## System Requirements

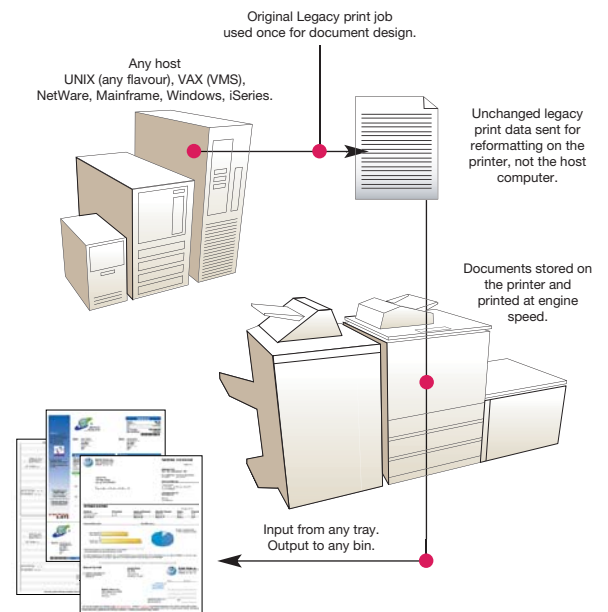
Intel® Pentium® III or better, or equivalent,  
Microsoft® Windows NT® 4.0 with SP6a, Windows® 2000  
with SP2, Windows XP or Windows Server 2003.

128 MB of RAM (256 MB recommended),  
500 MB of available hard-disk space,  
800x600 color monitor with 16-bit color or greater  
graphics card (1024x768 recommended).  
Adobe® Acrobat® or Acrobat Reader® 5.0 or higher.  
(Adobe® Reader® 6.0 included on CD).

**Additional Requirements for Windows NT 4.0**  
Internet Explorer 4.0 or higher. MDAC 2.5 or higher.  
JET 4.0 or higher. Script 5.5 or higher.  
Note: All are included on the CD.

### Printer Requirements

PostScript® language Level 2 or 3 compatible printer.  
16 MB of RAM (48 MB recommended).  
Hard-disk or flash memory recommended.



VISIT OUR WEB SITE FOR ADDITIONAL INFORMATION ON ALL OTHER PRODUCTS AT [WWW.RELYCO.COM](http://WWW.RELYCO.COM)

### PLANETPRESS. VERSION 4

Enable design and printing of transactional and variable content documents.

### PLANETPRESS. WATCH 4

Automated workflow tool to capture and route documents to their destination.

### PLANETPRESS. IMAGE 4

Automatically generate PDF, TIFF or JPG files for email and archive.

### PLANETPRESS. FAX 4

Transmit documents through a fax board or server.

### PLANETPRESS. SEARCH 4

Locate and retrieve indexed PDF files created with PlanetPress Image.

